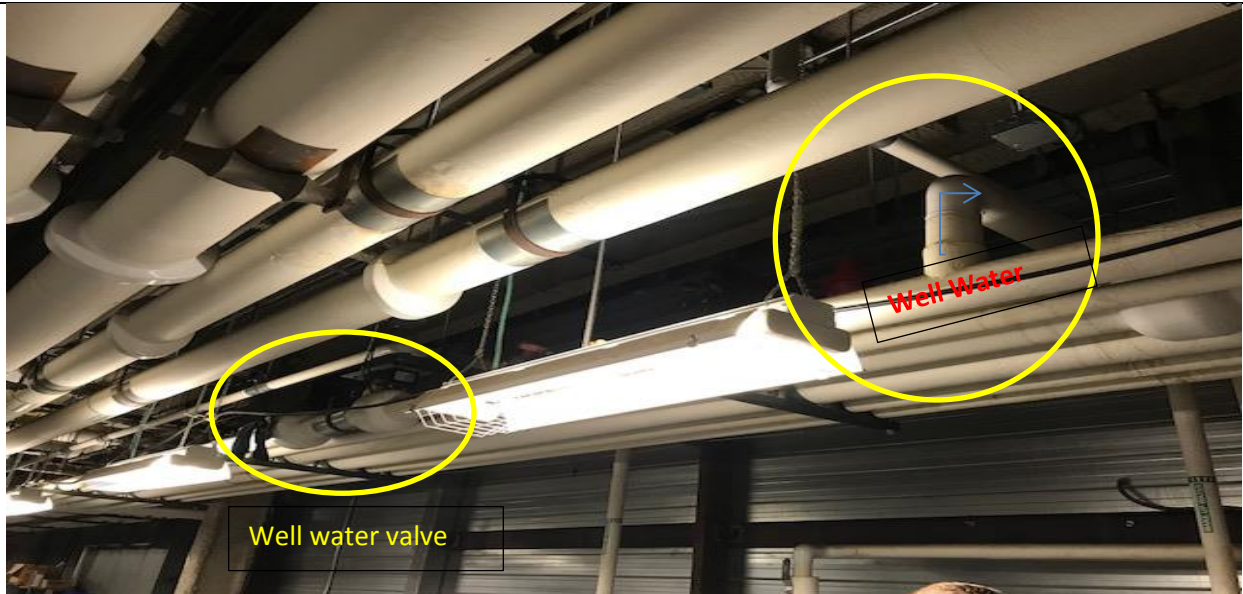
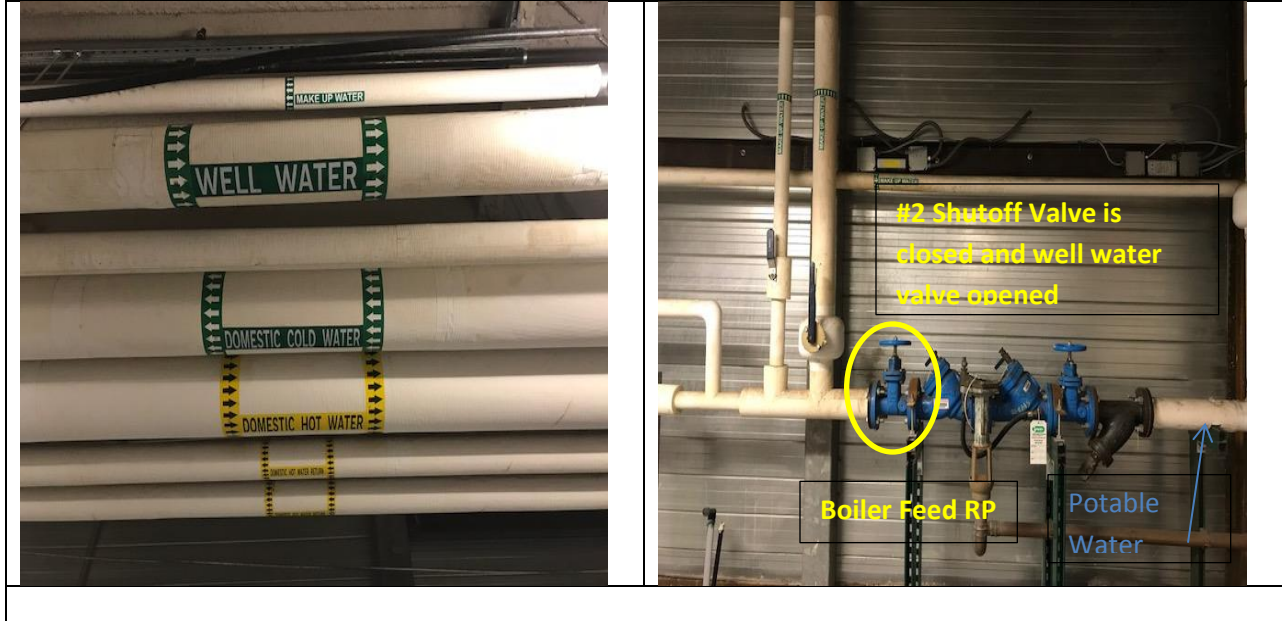


## Cross-Connection Control: Well Connection Interpretation



### Part 14 Cross Connection Rules

**Rule 1403 – Cross Connections Prohibited (3):** Piping configurations creating a potential for water from a public distribution system to flow through a private water main or customer site piping and back into the public system are prohibited.

### 2015 Michigan Plumbing Code

#### Section 608.6 Cross Connection Control

Cross connections shall be prohibited, except where approved backflow prevention assemblies, backflow prevention devices or other methods are installed to protect the potable water supply.

#### Section 608.6.1 Private water supplies

Cross connections between a private water supply and a potable public water supply shall be prohibited.